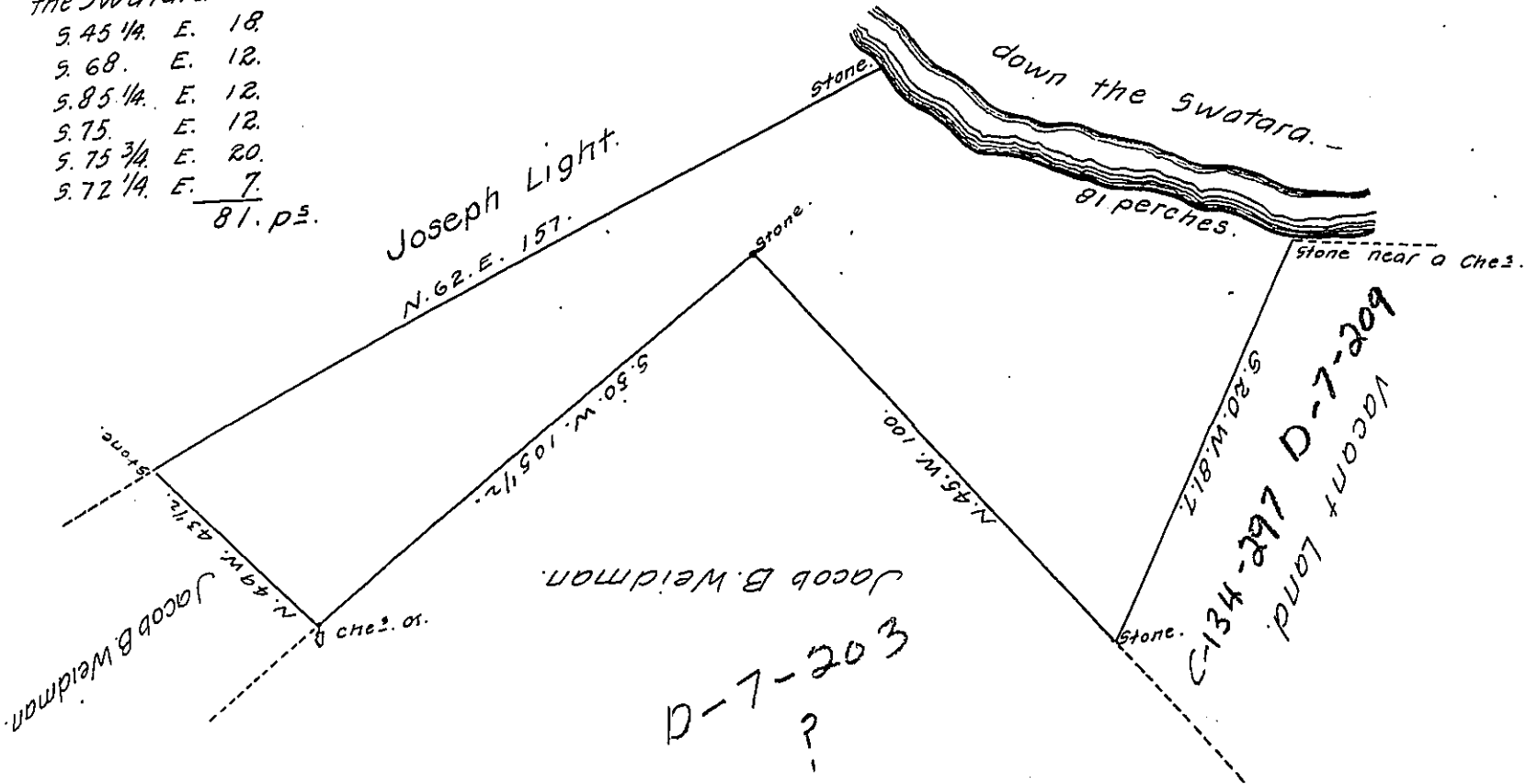


N.B. Courses & distances down the Swatara. -

S. 45 1/4	E. 18
S. 68	E. 12
S. 85 1/4	E. 12
S. 75	E. 12
S. 75 3/4	E. 20
S. 72 1/4	E. 7
<hr/>	
81. p ^s .	



A draught of a tract of land situate on the Swatara Gap, East Hanover Township, in the County of Lebanon, containing fifty one Acres, one hundred perches and the usual Allowance of six per Cent. for roads &c. Surveyed the 22nd. of November, 1837. By virtue of a warrant dated the 28th. of June, 1836 granted to Jacob Weidle.

Surveyed and returned for Jacob B. Weidman

To John Taylor, Esq;
 Surveyor General,
 of Penn^a.

Ezekiel Cherington, D.S.

IN TESTIMONY that the above is a copy of the original remaining on file in the Department of Internal Affairs of Pennsylvania, made conformably to an Act of Assembly approved the 16th day of February, 1833, I have hereunto set my Hand and caused the Seal of said Department to be affixed at Harrisburg, this twenty ninth day of March, 1911.

Henry Howell
 Secretary of Internal Affairs.